



PRESTIGE
OCEAN
CREST
— DONA PAULA, GOA —

A Prestige Group and Mathias Construction Pvt. Ltd. Joint Development

The home in Goa that you have always wanted, nestled in the classy locality of Dona Paula, overlooking the azure waters of the Arabian Sea.

Dona Paula is arguably the most high-profile location in Goa, with a history of luxury living that stretches back 300 years to 1774, when Da. Paula Amaral Antonia de Souto-Maio, after whom it is named, came to live here after her marriage. Today, it is a plush and self-contained suburb of Panaji and a sought-after residential locale.

As a neighbourhood, Dona Paula provides you with all the social infrastructure and conveniences that your lifestyle demands. Well reputed schools, healthcare facilities, diverse premium dining out options and world class malls are a short drive away. Dona Paula is also extremely accessible. It is well connected to all parts of Goa by arterial roads, the airport is just over a half-hour's drive away and the railway station just fifteen minutes.





Prestige Ocean Crest offers you a choice of superb homes, with expansive balconies to enable you to bask in the bracing sea air, soak in the magnificent views of the waves and enjoy an al fresco sundowner. Built in the Classical style with fine elements of detail to add visual richness and grandeur to the external appearance, Prestige Ocean Crest is an address to be envied.

Prestige residential developments are distinguished by how they effortlessly facilitate and foster community living of the very highest standards. Today, more than fifty thousand families proudly say that they have added Prestige to their lives and are happy and content in their Prestige dwellings. It is this differentiated quality of life that Prestige Ocean Crest brings to Goa. Here you will have at your command, a host of luxury amenities befitting your lifestyle including a Sea-View restaurant on the 4th and 5th floors, overlooking the sea, for a high end dining experience; a roof top club house with gym and party areas; and a swimming pool & sky deck facing the sea.





Prestige Ocean Crest is one of Prestige's pioneering residential developments in Goa. Rest assured that the future will see us develop more such communities here.

Turn the page to discover and explore luxury living like never before in Goa. Then talk to us to call it home!

RERA NUMBER:
PRGOO2201073





*BECAUSE YOU DESERVE THE PRIVILEGE
OF BEING CLOSE TO EVERYTHING*

Your time is precious and Prestige Ocean Crest's brilliant location makes sure that reaching anywhere or going back home is a smooth and easy experience. It is eminently accessible through major arterial roads and within ready reach of all modes of transport.



*BECAUSE THE BEST WAY TO HAVE FUN
IS ON THE SPUR OF THE MOMENT*

You never know when the mood will seize you to let your hair down and indulge yourself a little. And when it does, Panaji's elite shopping hubs and entertainment zones are all just a quick hop away. That's the privilege of residing in Goa's most luxurious residence.

*OUTSIDE, THE SUNKISSED HORIZON
BECKONS; ON THE TABLE, LUSCIOUS
VIANDS TEMPT YOU*

Lean back, breathe in the salubrious sea air, and soak in the breathtaking view of the waves as you tuck into delicacies served with aplomb in the Sea View Restaurant at Prestige Ocean Crest.



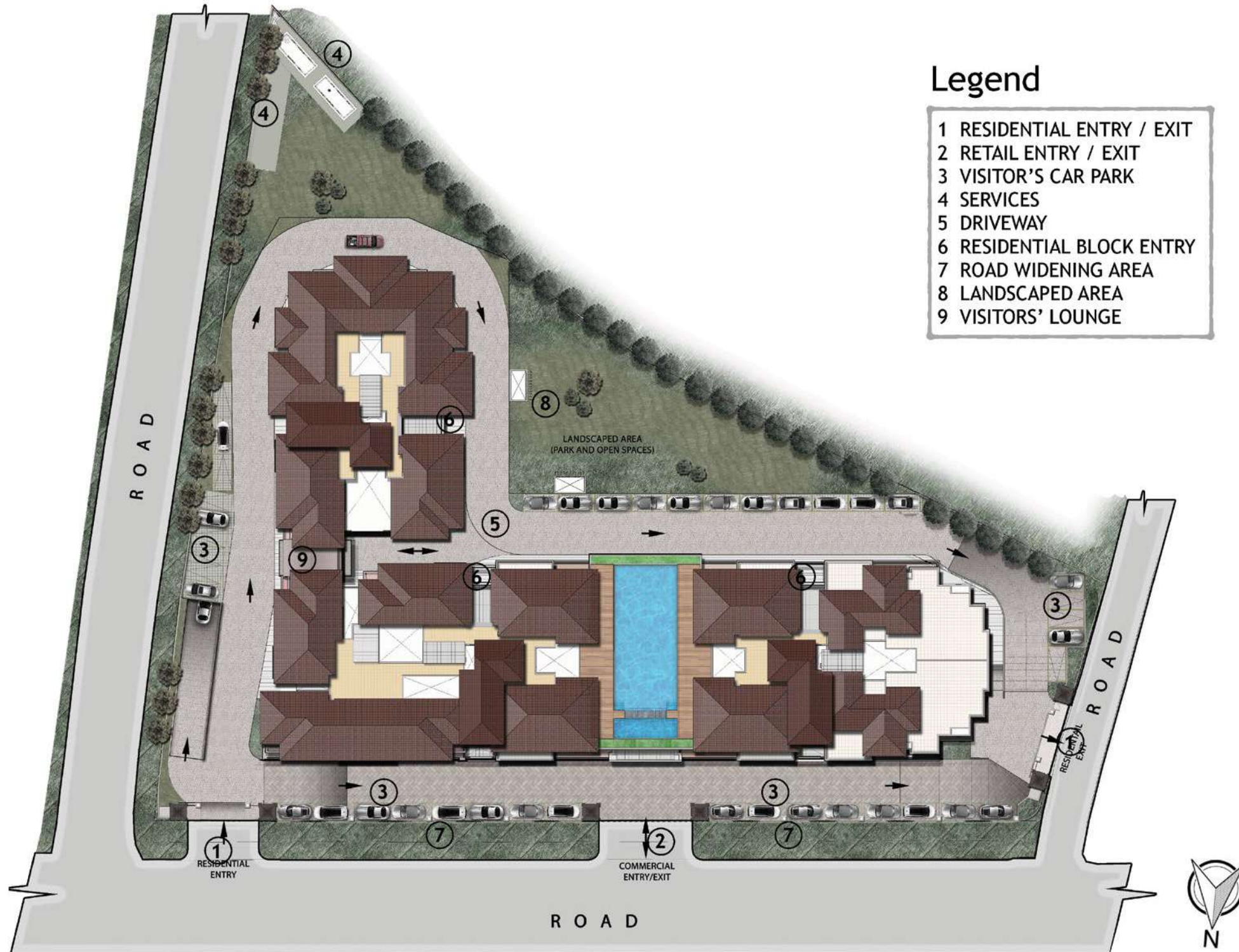




*LEISURELY LAPS 'NEATH AN
AZURE SKY. VIGOROUS WORKOUTS
IN CLIMATE-CONTROLLED
COMFORT...WHATEVER CAPTURES
YOUR HIGHNESS' FANCY*

The legendary Grand Dame of Goa, Senora Dona Paula herself, would have loved to be a resident of Prestige Ocean Crest. Of such a rare excellence are the many amenities placed at your disposal, when the whim moves you.

MASTER PLAN



STILT FLOOR PLAN



ELEVATED GROUND FLOOR PLAN



FIRST FLOOR PLAN



EXTERIOR VIEW



Artist's impression



INSPIRED
Since 1999

KEEP CLAM
Bollinger

Champagne
Since 1876

Bollinger
Shop



SECOND FLOOR PLAN



Legend

Color	Unit Type	No of Bed	Area (sft)
Light Brown	A	4B + Maid	3147
Yellow	B	3B + Maid	2652
Orange	C	3B + Maid	2011
Light Pink	D	3B	1502
Light Red	D1	3B	1439 sft
Light Red	D2	3B	1504 sft



THIRD FLOOR PLAN



FOURTH FLOOR PLAN



FIFTH FLOOR PLAN



SIXTH FLOOR PLAN

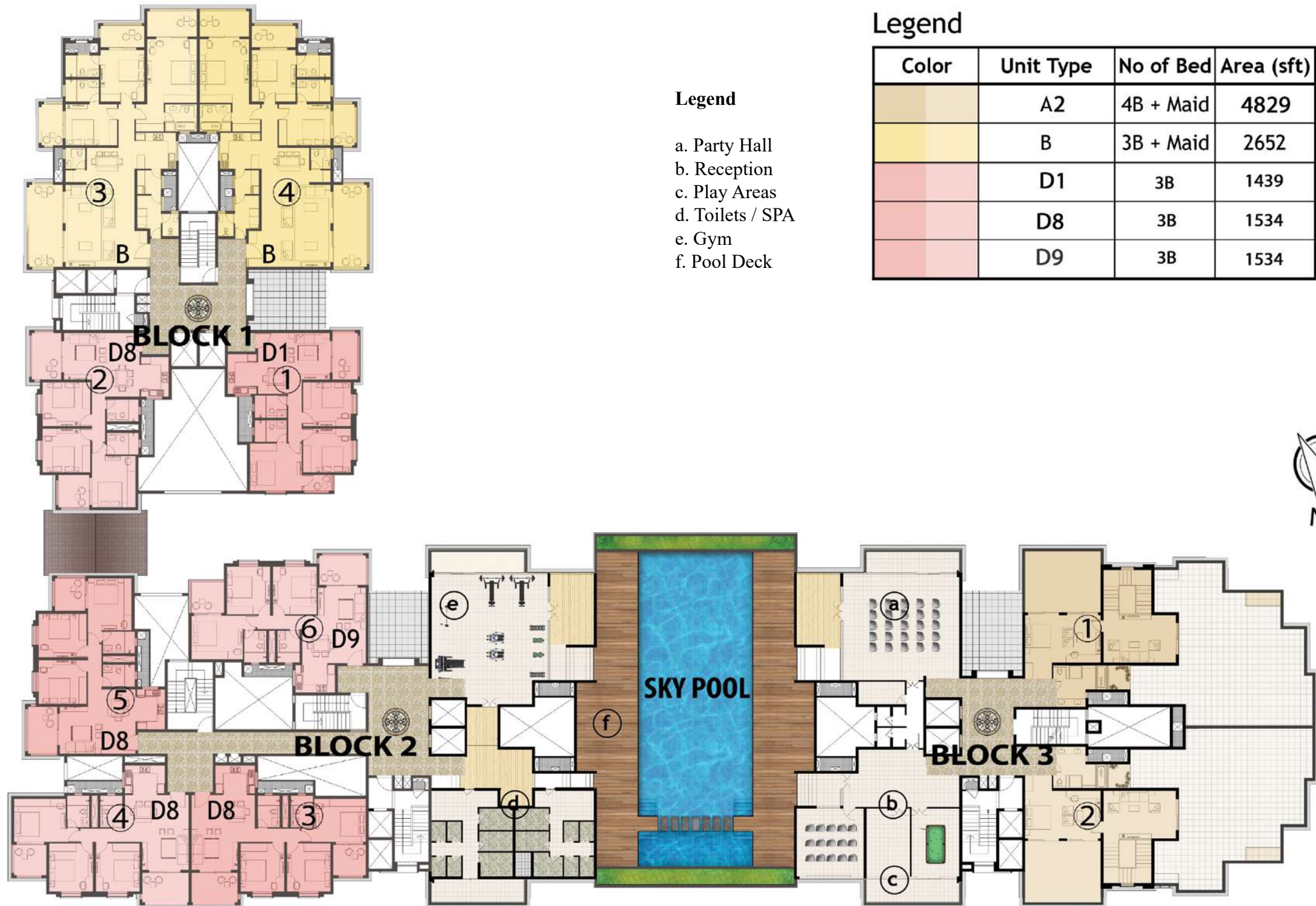


Legend

Color	Unit Type	No of Bed	Area (sft)
(Light Brown)	A2	4B + Maid	4829
(Yellow)	B	3B + Maid	2652
(Orange)	C3	3B + Maid	2069
(Light Red)	D1	3B	1439
(Pink)	D6	3B	1574
(Light Red)	D7	3B	1576



SEVENTH FLOOR PLAN



Legend

- a. Party Hall
- b. Reception
- c. Play Areas
- d. Toilets / SPA
- e. Gym
- f. Pool Deck





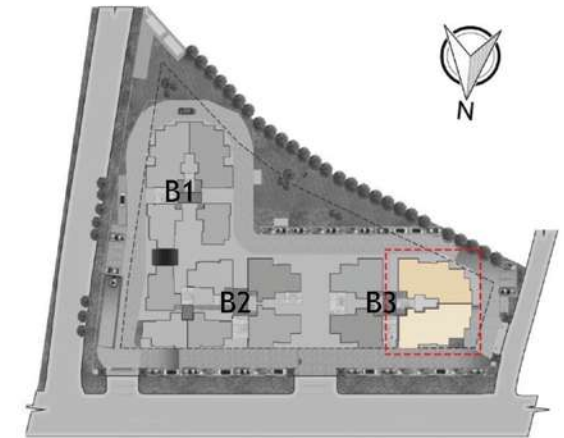
Artist's impression



EXTERIOR VIEW

UNIT PLAN - TYPE A - 4 BED+MAID

Block - 3
 Unit 01 & 02
 1st Floor to 5th Floor

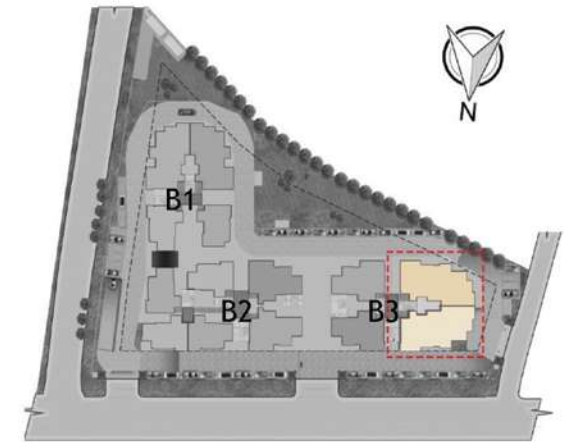


KEY PLAN

	SFT	SQM
SALE AREA	3147	292.363
CARPET AREA	1912	177.650

UNIT PLAN - TYPE A1 - 4 BED+MAID

Block - 3
 Unit 01 & 02
 Elevated Ground Floor



KEY PLAN

	SFT	SQM
SALE AREA	3186	295.987
CARPET AREA	1912	177.650
1/3rd TERRACE AREA	39	3.623

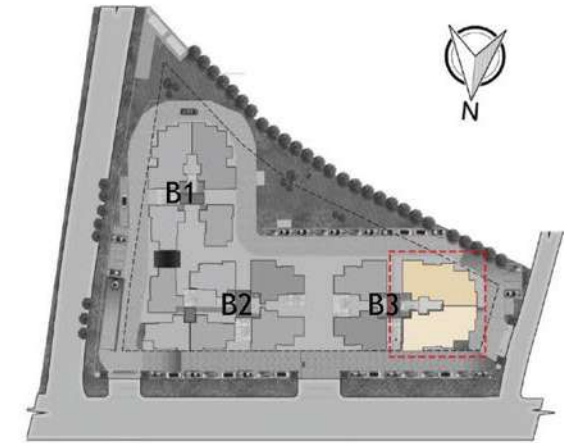
UNIT PLAN - TYPE A2 - 4 BED+MAID (PENT)

Block - 3
 Unit 01 & 02
 6th & 7th Floor



UNIT PLAN - TYPE A2 - 4 BED+MAID (PENT)

Block - 3
 Unit 01 & 02
 6th & 7th Floor



KEY PLAN

	SFT	SQM
SALE AREA	4829	448.656
CARPET AREA	2669	247.944
1/3rd TERRACE AREA	587	54.534

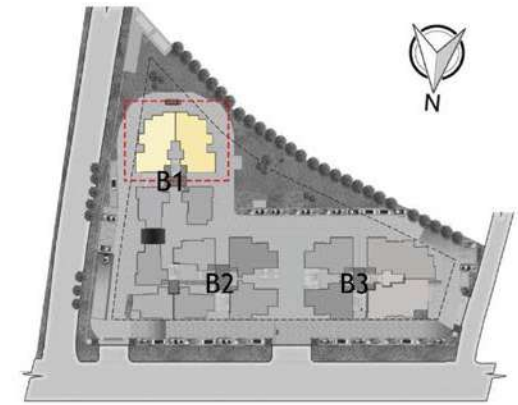
LOBBY VIEW



Artist's impression

UNIT PLAN - TYPE B - 3 BED+MAID

Block - 01
 Unit 03 & 04
 Elevated Ground Floor
 to 7th Floor



KEY PLAN

	SFT	SQM
SALE AREA	2652	246.377
CARPET AREA	1546	143.659

LIVING



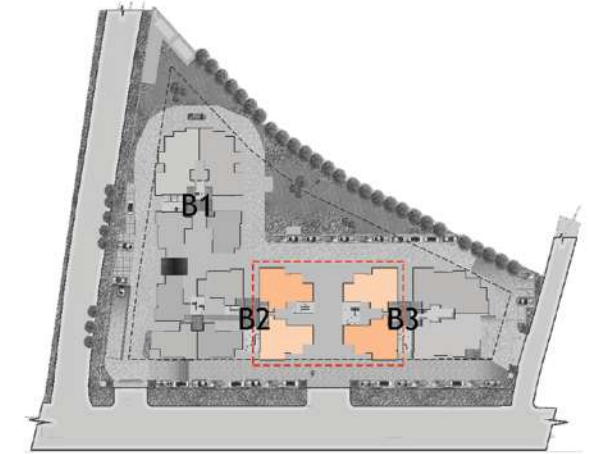
Artist's impression

UNIT PLAN - TYPE C - 3 BED+MAID

Block - 02 & 03

Unit 01 & 02 - Block 2 - 1st, 2nd, 3rd, 5th Floor

Unit 03 & 04 - Block 3 - 1st, 2nd, 3rd, 5th Floor



KEY PLAN

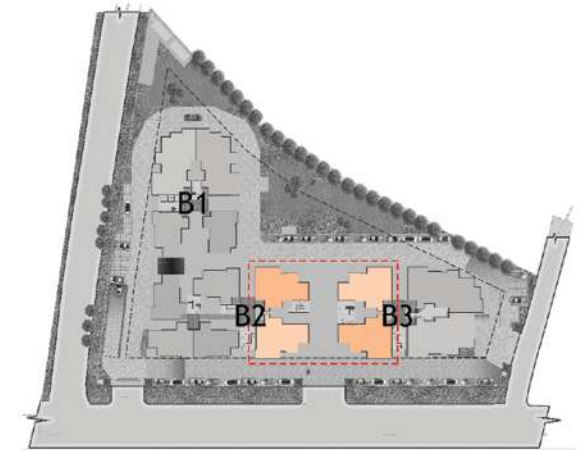
	SFT	SQM
SALE AREA	2011	186.826
CARPET AREA	1222	113.563

UNIT PLAN - TYPE C1 - 3 BED+MAID

Block - 02 & 03

Unit 01 & 02 - Block 2 - Elevated Ground Floor

Unit 03 & 04 - Block 3 - Elevated Ground Floor



KEY PLAN

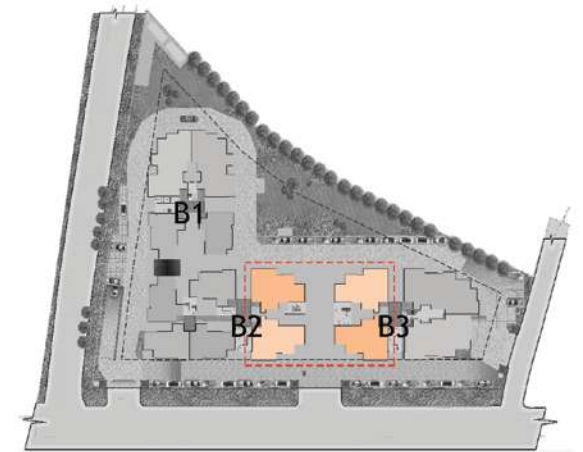
	SFT	SQM
SALE AREA	2098	194.878
CARPET AREA	1222	113.563
1/3rd TERRACE AREA	87	8.082

UNIT PLAN - TYPE C2 - 3 BED+MAID

Block - 02 & 03

Unit 01 & 02 - Block 2- 4th Floor

Unit 03 & 04 - Block 3 - 4th Floor



KEY PLAN



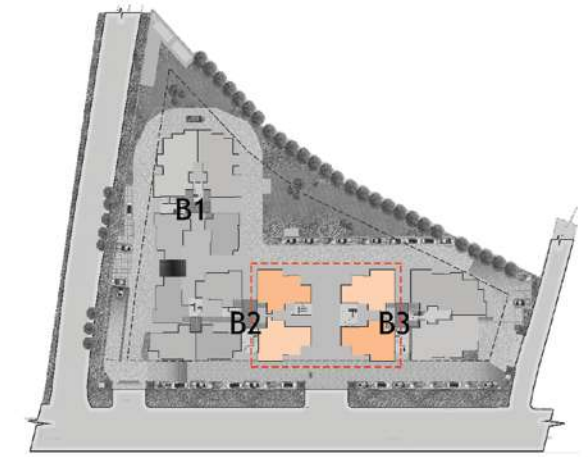
	SFT	SQM
SALE AREA	2026	188.251
CARPET AREA	1222	113.563
1/3rd TERRACE AREA	15	1.394

UNIT PLAN - TYPE C3 - 3 BED

Block - 02 & 03

Unit 01 & 02 - Block 2 - 6th Floor

Unit 03 & 04 - Block 3 - 6th Floor



KEY PLAN

	SFT	SQM
SALE AREA	2069	192.215
CARPET AREA	1222	113.563

BEDROOM



Artist's impression

KITCHEN



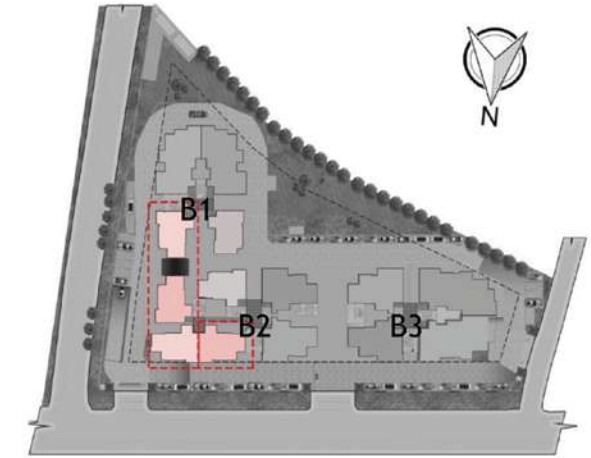
Artist's impression

UNIT PLAN - TYPE D - 3 BED+2T

Block - 01 & 02

Unit 02 - Block 01 - 1st, 2nd, 4th, & 5th Floor

Unit 03,04,05 - Block 02 - 1st, 2nd, 4th, & 5th Floor



KEY PLAN

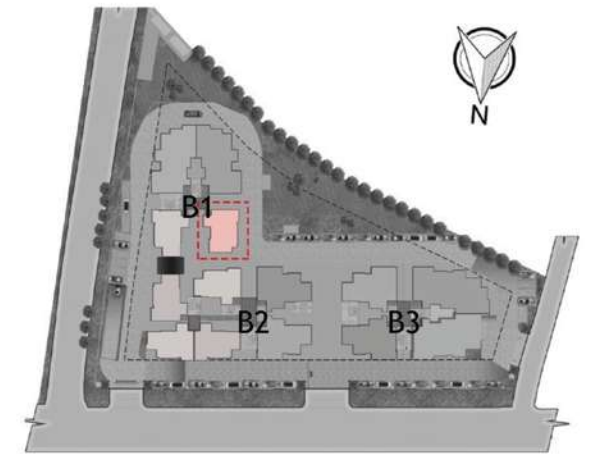
	SFT	SQM
SALE AREA	1502	139.539
CARPET AREA	932	86.557

UNIT PLAN - TYPE D1 - 3 BED+2T

Block - 01

Unit 01

Elevated Ground Floor to 7th Floor



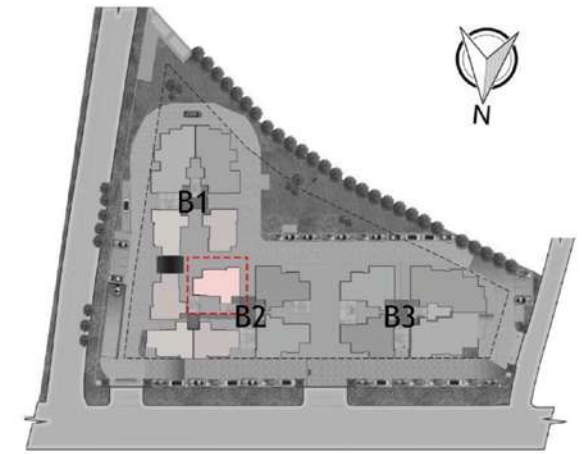
KEY PLAN

	SFT	SQM
SALE AREA	1439	133.691
CARPET AREA	922	85.649

UNIT PLAN - TYPE D2 - 3 BED+2T

Block - 02

Unit 06 - 1st, 2nd, 4th, & 5th Floor



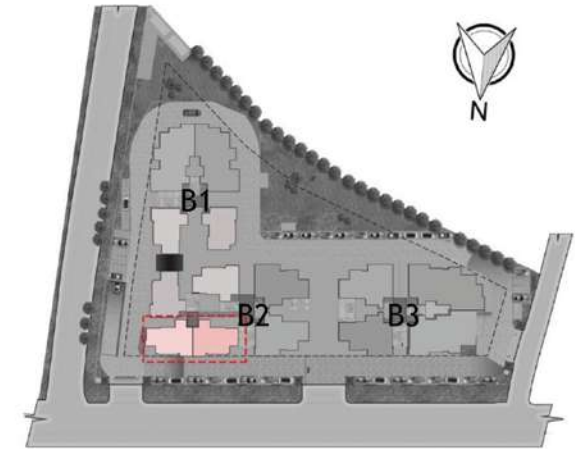
KEY PLAN

	SFT	SQM
SALE AREA	1504	139.698
CARPET AREA	933	86.654

UNIT PLAN - TYPE D3 - 3 BED+2T

Block - 02

Unit 03 & 04 - Elevated Ground Floor



KEY PLAN

	SFT	SQM
SALE AREA	1538	142.912
CARPET AREA	932	86.557
1/3rd TERRACE AREA	48	4.459

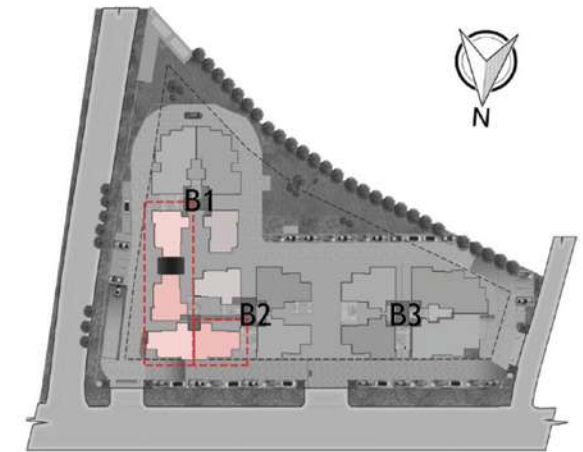
UNIT PLAN - TYPE D4 - 3 BED+2T

Block - 01 & 02

Unit 02 - Block 01 - Elevated Ground Floor & 3rd Floor

Unit 03,04,05 - Block 02 - 3rd Floor

Unit 05 - Block 02 - Elevated Ground Floor



KEY PLAN

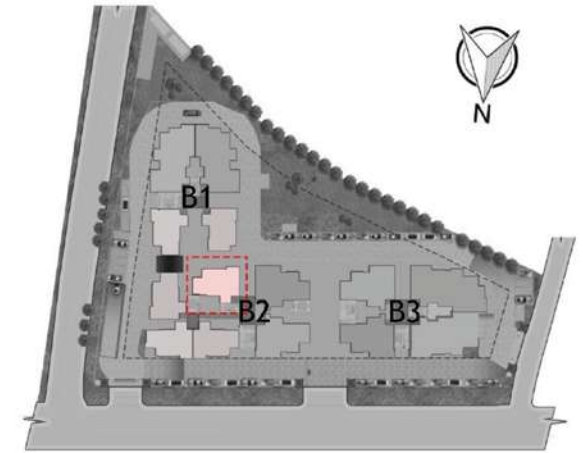
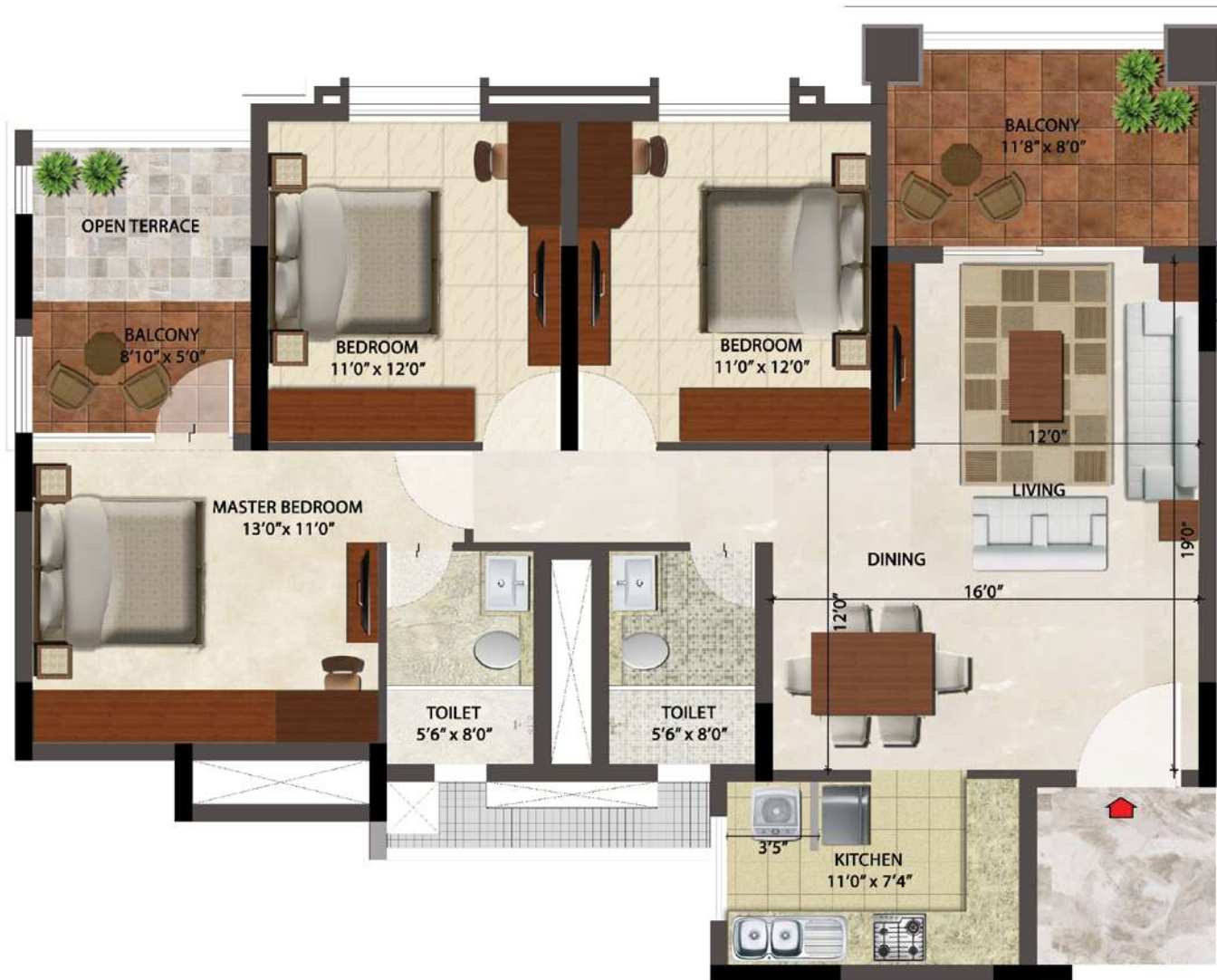
	SFT	SQM
SALE AREA	1521	141.341
CARPET AREA	932	86.557
1/3rd TERRACE AREA	19	1.765

UNIT PLAN - TYPE D5 - 3 BED+2T

Block - 02

Unit 06

Elevated Ground Floor & 3rd Floor



KEY PLAN

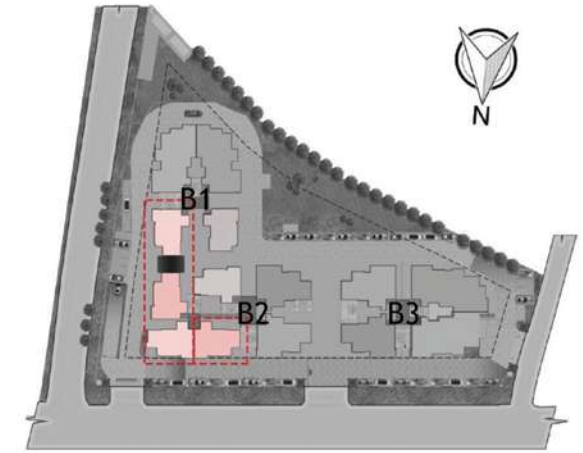
	SFT	SQM
SALE AREA	1523	141.461
CARPET AREA	933	86.654
1/3rd TERRACE AREA	19	1.765

UNIT PLAN - TYPE D6 - 3 BED+2T

Block - 01 & 02

Unit 02 - Block 01 - 6th Floor

Unit 03,04,05 - Block 02 - 6th Floor

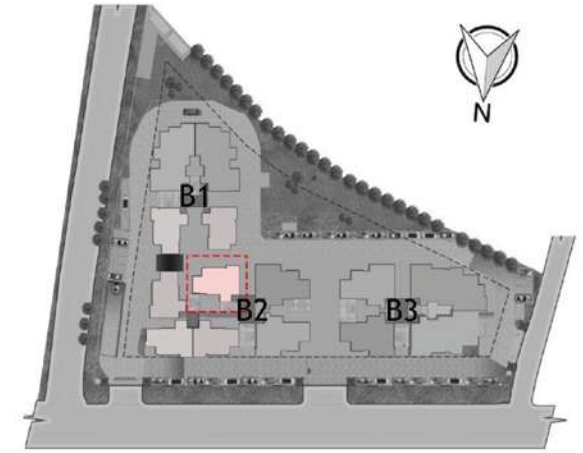


KEY PLAN

	SFT	SQM
SALE AREA	1574	146.250
CARPET AREA	932	86.557

UNIT PLAN - TYPE D7 - 3 BED+2T

Block - 02
Unit 06 - 6th Floor



KEY PLAN

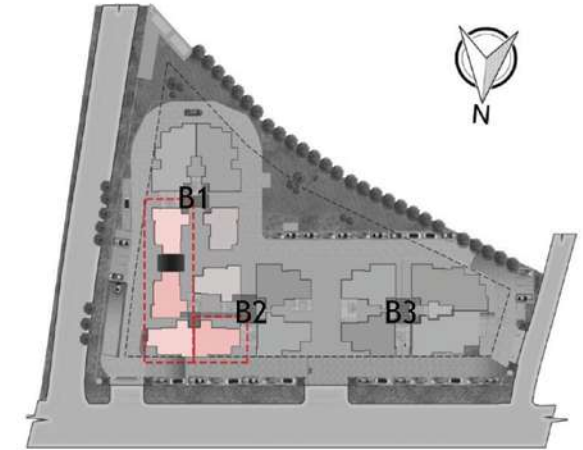
	SFT	SQM
SALE AREA	1576	146.370
CARPET AREA	933	86.654

UNIT PLAN - TYPE D8 - 3 BED+2T

Block - 01 & 02

Unit 02 - Block 01- 7th Floor

Unit 03,04,05 - Block 02 - 7th Floor



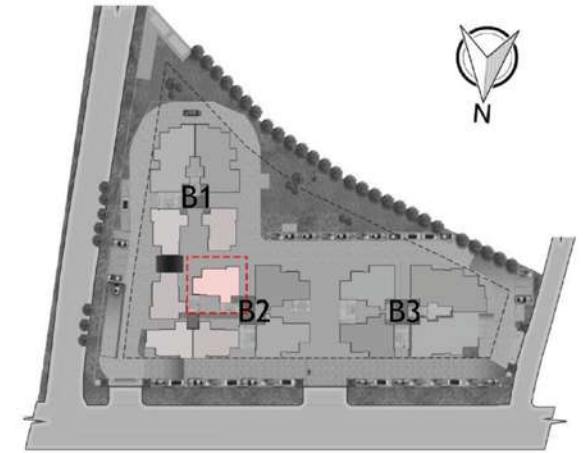
KEY PLAN

	SFT	SQM
SALE AREA	1534	142.489
CARPET AREA	932	86.557

UNIT PLAN - TYPE D9 - 3 BED+2T

Block - 02

Unit 06 - Block 02 - 7th Floor



KEY PLAN

	SFT	SQM
SALE AREA	1534	142.489
CARPET AREA	932	86.557

SWIMMING POOL



Artist's impression

CLUBHOUSE - PLAN

Clubhouse - 7th Floor



KEY PLAN

LOCATION MAP

KEY DISTANCES

Goa University	- 2.0 Kms
Dona Paula Jetty	- 2.0 Kms
Manipal Hospital	- 1.0 Kms
Cidade De Goa (5 Star Hotel)	- 1.0 Kms
Miramar Beach	- 0.3 Kms
J W Marriot (5 Star Hotel)	- 1.2 Kms
Raj Bhavan	- 0.6 Kms
Panjim City	- 2.0 Kms
Rajiv Gandhi IT Park	- 1.0 Kms
Karmali Station	- 17.01 Kms
Dabolim International Airport	- 27.2 Kms
Candolim Beach	- 20.0 Kms
Calangute Beach	- 22.0 Kms
Baga Beach	- 23.0 Kms





Prestige Ocean Crest
Plot No. 249/1- A, Dr. E Borges Road, Opposite NIO Colony,
Dona Paula Taleigao, Tiswadi, Goa-403206



Prestige Estates Projects Ltd.
Prestige Falcon Towers, No.19, Brunton Road, Bengaluru - 560025, Karnataka
Ph: 080 - 25591080, Fax: 080 - 25591945, E-mail: properties@prestigeconstructions.com
www.prestigeconstructions.com

Like us on Facebook • Follow Us on Twitter • Make sure you visit The Falcon Blog for the latest at Prestige.

New York Sales Center: Indehaus, www.indehaus.com

• Bengaluru • Chennai • Goa • Hyderabad • Kochi • Mangaluru • Mysuru

This brochure is conceptual and has been prepared based on the inputs provided by the Project Architect, which may vary during execution. The Promoter reserves the right to change, alter, add or delete any of the specifications mentioned herein based on site conditions and construction exigencies without prior permission or notice. The external color schemes and detailing of landscape may vary as may be suggested by the Architect considering the site conditions.

The furniture shown in the plans is only for the purpose of illustrating a possible layout and does not form a part of the offering or specifications. All Apartment interior views do not depict the standard wall, color & ceiling finishes and are not part of the offering.

Further, the dimensions mentioned do not consider the plastering thickness and there could be marginal variation in carpet areas.

A Prestige Group and Mathias Construction Pvt. Ltd. Joint Development